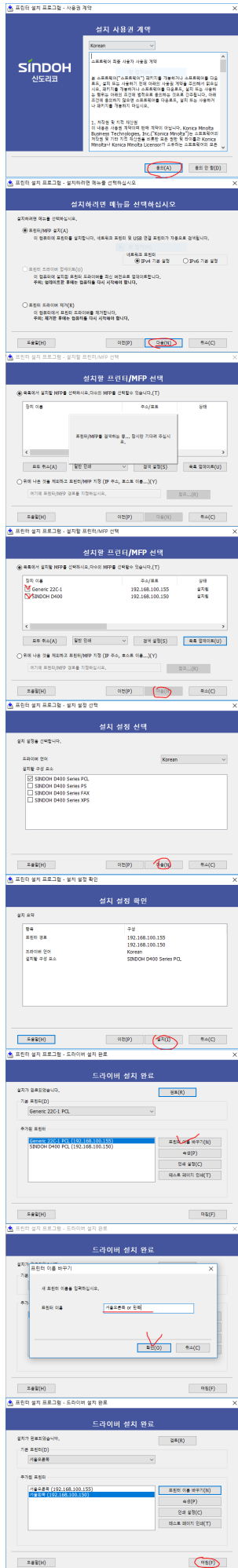


- 220v 6
- 2
 1. - 가 (가)
 2. PC
 3. 가
- - ,
 -
 -

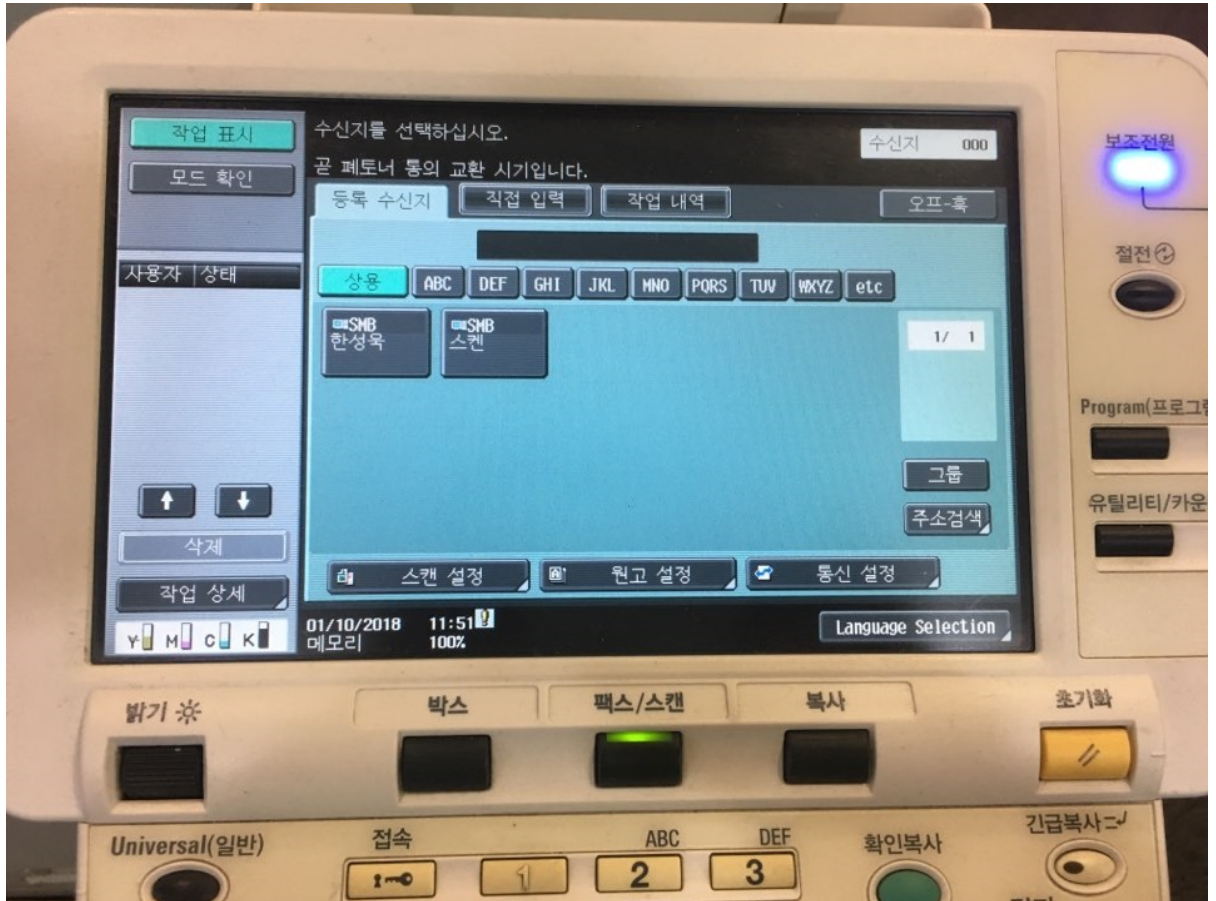
1.
 1. PC
 2. PC OS . (32 or 64) - 가
 3. \\192.168.100.205\scan .
 4. 'Sindoh_D400_Ser_ _v3.7.0.OSW1_01_x86x64_ENG_KOR'
 5. Driver Setup or Setup64 . ()



6.

1.

- 1. A4 (1 & 가)
- 2. /
- 3. /



- 4. scan
- 5. (
- 6.)
- 7. PC
- 8. PDF \\192.168.100.205\scan 가 . (
- 9. PDF .)
- 10.

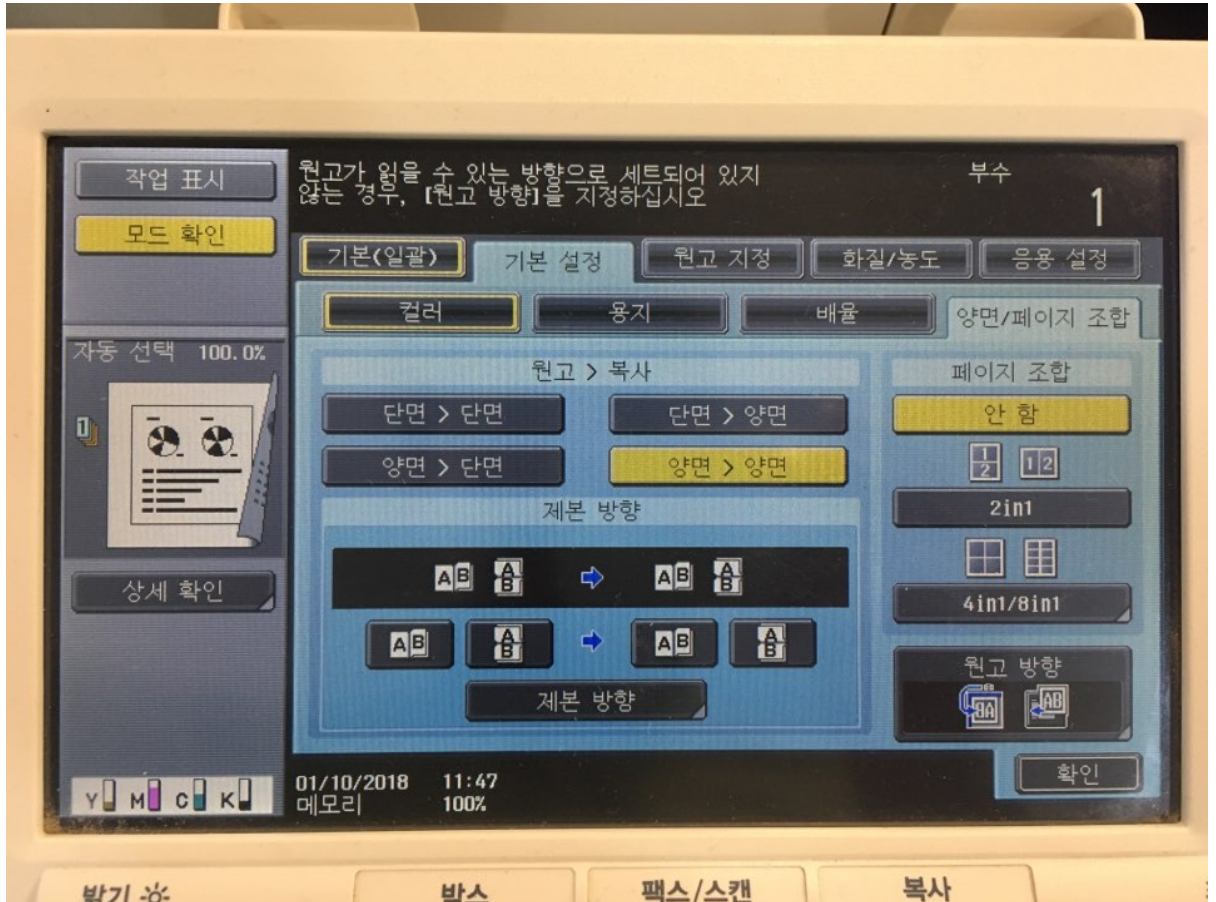
- 1. - A4 (1 & 가)
- 1.
- 2.
- 3.

2. - (,)

- 1.
- 2.
- 3.
- 4.

3. - A4 (1 & 가)

1. - / " > / > / > / > "



- 2.
- 3.
- 4.

- 1.
- 2.
- 3.
- 4.

•

•

•

복기 ☀ 박스 팩스/스캔 복사

()

- 1. : *72 가
- 2. : *73 가 가

가

- 1.
- 2. . LAN . (PC)
- 3. 가 PC .

From:
<http://wiki.eclc.co.kr/> - **KELC_WIKI**

Permanent link:
<http://wiki.eclc.co.kr/doku.php?id=work:newcomer&rev=1538618204>

Last update: **2018/10/04 01:56**

